

ISLANDS OF INFINITY (/)

Follow islandsofinfinity
#ETSY.COM (/ETSY)
#SANJEEVINI (/SANJEEVINI)
#THESCIENCE (/SCIENCE)
ARCHIVE (/ARCHIVE)

📄
(https://www.tumblr.com/leebog/TmN3AJDJ)
f (https://www.facebook.com/leebog/feed?)
a (https://www.instagram.com/leebog/?hl=en)
🐦 (https://www.tumblr.com/leebog/leebog)
📄=https://www.tumblr.com/leebog/leebog

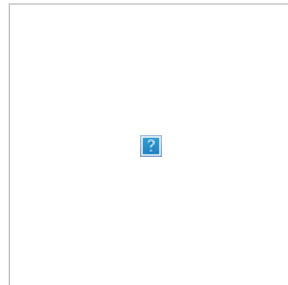
o

THE SCIENCE BEHIND CHI PRODUCTS ()

White Powder Gold ~ Monoatomic Gold (https://tumblr.com/redirect?)

z=http%3A%2F%2Fwww.asc-

alchemy.com%2F&t=OGU5MjUyMjQ4ZDUwNjdlMjcxNDA4MGRIZDc2M2NhNjliZThlODlmNyxUbU4zdWpESg%3D%3D&p=)



White powder gold (https://tumblr.com/redirect?z=http%3A%2F%2Fwww.asc-

alchemy.com%2Fmono.html&t=MzY5YjEwNTNhYTk5YzYyNzdmOTA4OGZmNmM1NjNkMWJlODFiNjJhZixUbU4zdWpESg%3D%3D&p=)

exists naturally in our bodies and is contained in small amounts in the herbs and foods that enhance the immune system and regeneration. The Egyptians, and others, created them in pure form. They understood important alchemical qualities regarding the use of these sacred monoatomic elements to accelerate the ascension process.

Egyptian priests made the **mfkzt** (https://tumblr.com/redirect?z=http%3A%2F%2Fwww.gold-

eagle.com%2Farticle%2Fmfkzt-new-dimension-value-

gold&t=OTEyMzVjMTliNzc1ZTViNDhZTU4NTkzMjI3MTUyNzZmMjVlNGY5YixUbU4zdWpESg%3D%3D&p=)

(white powder gold) which was described as a conical, white bread made from gold and was both eaten and offered to the gods.

White powder gold, rediscovered by **David Hudson** (https://tumblr.com/redirect?)

z=http%3A%2F%2Fwww.asc-

alchemy.com%2Fhudson.html&t=ZWQwYjFjZlUxZjliNGUxZjQyZGUzN2I3OGFjODIkmZkZWYzNGRhZixUbU4zdWpESg%3D%3D&p=)

and popularized by **Sir Laurence Gardner** (https://tumblr.com/redirect?)

z=http%3A%2F%2Fwww.graal.co.uk%2F&t=OGVhZlUyZmYyZmYyNDZmZDRiZmY5NjJhZixUbU4zdWpESg%3D%3D&p=)

has been used for ages on this planet to greatly accelerate the ascension process. Lemuria, Egypt, and other sacred civilizations and spiritual sects have utilized this little-known spiritual biochemistry.

White powder gold as well as **monoatomic rhodium and monoatomic iridium**

(https://tumblr.com/redirect?z=http%3A%2F%2Fwww.asc-

alchemy.com%2Fmono.html&t=MzY5YjEwNTNhYTk5YzYyNzdmOTA4OGZmNmM1NjNkMWJlODFiNjJhZixUbU4zdWpESg%3D%3D&p=)

are unique in form and function. David Hudson theorized that the elongated nuclei (2:1 height/width ratio)* of monoatomic elements allowing for a high spin state, along with "paired" electrons, makes them **bio superconductors** (https://tumblr.com/redirect?)

z=http%3A%2F%2Fwww.asc-

alchemy.com%2Fmono.html&t=MzY5YjEwNTNhYTk5YzYyNzdmOTA4OGZmNmM1NjNkMWJlODFiNjJhZixUbU4zdWpESg%3D%3D&p=).

White powder gold together with white powder rhodium/iridium facilitate a flow of

energy thru the body with little or no resistance: and that light continues to flow, even without additional external potential. As you move from 3rd-4th to 5th dimensional beings of light the innate resistances (some call karma) to the higher dimensional frequencies can cause discomfort, imbalance, and even disease.

These resistances are reflected on many levels: as physical tension and organic disturbances, as convoluted core beliefs and emotional imbalance, as samskaras or seed blocks in the chakras, as aberrant DNA.

White powder gold together with rhodium and iridium can supersede these resistances by allowing a continual flow of light that ultimately washes away and heals, all the way down to the sub-atomic level.

White powder gold creates a light vortex that is spinning, or spiraling at tremendous speed with zero momentum, a null particle/wave. (A particle is a wave that is brought into form by attention and observation).

This is why we call our products "Islands of Infinity (<https://t.umbl.com/redirect?z=https%3A%2F%2Fwww.etsy.com%2Fshop%2FIslandsOfInfinity&t=MzdkN2JkOThmNmEzZDIyOWE2NDE1MDBiNzc4YTE5N2Nk>)

Sanathana Sai Sanjeevini Geometries (<https://t.umbl.com/redirect?z=http%3A%2F%2Fwww.saisanjeevini.org%2F&t=ZWJIOGQzZTJiMjdmY2I2ZDU4OGQ2N2Y4ZDRkZmM0NTBiMTI1Njg0NixUbU4zdWpESg%3D%3D>)

z=<http%3A%2F%2Fwww.saisanjeevini.org%2F&t=ZWJIOGQzZTJiMjdmY2I2ZDU4OGQ2N2Y4ZDRkZmM0NTBiMTI1Njg0NixUbU4zdWpESg%3D%3D>



The Sanathana Sai Sanjeevinis are subtle spiritual vibrations of all of Nature's own healing forces. These vibrations have been harnessed through focused prayers on to cards as printed patterns or geometric symbols using the science of Radiesthesia.

Anthony has increased their power by photo-etching the Sanjeevini radionic patterns into brass, and combining them with monoatomic gold, magnetite, resin and orgone energy.

The human body is sensitive to energy changes, both internal and external influences. Consequently, disruption in the energy flow can have a profound effect on one's physical and emotional health causing disease in the body.

By administering suitable healing vibrations, it is possible to correct the distorted energy pattern and bring the diseased physical organ into a healthy state. Disharmony in the energy flow is detected and healthy vibrations filter down to all the bodies. The healing vibrations act as a catalyst to awaken the inner healing power within the organs to bring about the cure.

Sanjeevinis do not interfere with other systems of medicine that the patient may be using - either Allopathic, Homeopathic, Ayurvedic or any other healing method including naturopathic, herbal, or spiritual e.g. Reiki, Mahakari, Pranic healing, Vibronics, meditation.

Magnetite (<https://t.umbl.com/redirect?z=http%3A%2F%2Fwww.affs.org%2Fhtml%2Fbiomagnetism.html&t=MDg2ODJiYzJiMmFmZGM0YjJjZWJjZDU3OGI2YTZhOThkMjg1M2U3YSxUbU4>)

z=<http%3A%2F%2Fwww.affs.org%2Fhtml%2Fbiomagnetism.html&t=MDg2ODJiYzJiMmFmZGM0YjJjZWJjZDU3OGI2YTZhOThkMjg1M2U3YSxUbU4>



Scientists are now asking the fundamental question: What is magnetite doing in the human brain?

Magnetite is a black mineral form of iron oxide. Magnetite is **ferromagnetic**

(<https://t.umbl.com/redirect?z=http%3A%2F%2Fen.wikipedia.org%2Fwiki%2FFerromagnetism&t=OWEzMDIwZmRmM2QzZWU2YTBlNWU1Y2IwNzcwNGY5MDImNTE0NjUyNyxt>)

z=<http%3A%2F%2Fen.wikipedia.org%2Fwiki%2FFerromagnetism&t=OWEzMDIwZmRmM2QzZWU2YTBlNWU1Y2IwNzcwNGY5MDImNTE0NjUyNyxt>

Ferromagnetic crystals interact more than a million times more strongly with external magnetic fields than do diamagnetic or paramagnetic materials.

Ferromagnetism is the phenomenon exhibited by substances, such as iron, that show increasing magnetization with applied magnetizing field and persists after the removal of the applied field.

In magnetite-containing bacteria, the answer is simple: Magnetite crystals turn the bacteria into swimming needles that orient with respect to the earth's magnetic fields. Magnetite has also been found in animals that navigate by compass direction, such as bees, birds, and fish.

Biomagnetism (<https://t.umbl.com/redirect?z=http%3A%2F%2Fen.wikipedia.org%2Fwiki%2FBiomagnetism&t=MGZhNTg0NmQzNGJkMmZlZDMxNGRmNTk5ZWYxZjBmZDlkNGI0NDgwYSxUbl>)

z=<http%3A%2F%2Fen.wikipedia.org%2Fwiki%2FBiomagnetism&t=MGZhNTg0NmQzNGJkMmZlZDMxNGRmNTk5ZWYxZjBmZDlkNGI0NDgwYSxUbl>

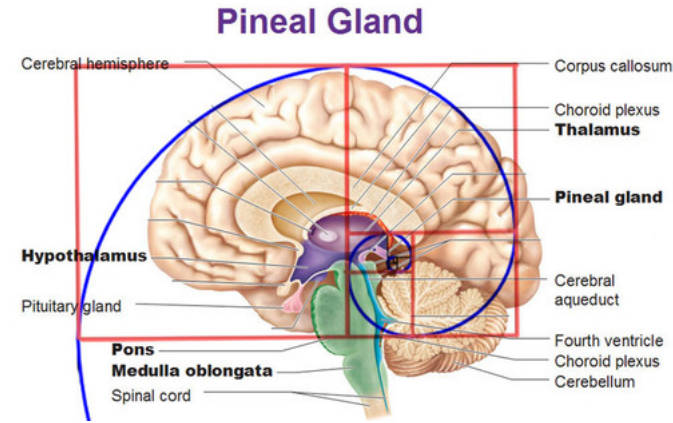
is usually related to the presence of **biogenic** (https://t.umbl.com/redirect?z=http%3A%2F%2Fen.wikipedia.org%2Fwiki%2FBiogenic_substance&t=ZWU5MmQzOTJjZTdmZDg5YmNkZTcwZDcwN2FjMTFIOGYzZTRkN2U3OCx)

z=http%3A%2F%2Fen.wikipedia.org%2Fwiki%2FBiogenic_substance&t=ZWU5MmQzOTJjZTdmZDg5YmNkZTcwZDcwN2FjMTFIOGYzZTRkN2U3OCx

crystals of magnetite, which occur widely in organisms, including humans. These crystals are

found in the brain and are involved in **magnetoreception** (<https://t.umbl.com/redirect?z=http%3A%2F%2Fen.wikipedia.org%2Fwiki%2FMagnetoreception&t=NzRiNGRkMjk5OWMxNDE2MTJjMzcwMWZmNTgzZDYxODVhYzc3YmYyZCxCxUbl>) the ability to sense the polarity or the inclination of the **Earth's magnetic field** (https://t.umbl.com/redirect?z=http%3A%2F%2Fadventure.howstuffworks.com%2Foutdoor-activities%2Fhiking%2Fcompass1.htm&t=YTYwZjFjYjVjNWJlNTI2NGVmMzcwMGEyMDgxY2NiN2JhMjNIOTg0O0SxUbU4zdWpESg%3D%3D&p=)), and aid in navigation

The pineal gland, which is located roughly at the center of your head, has an abundance of magnetite crystals. This glandular structure is believed to be the receiving point of the higher mind and has been revered in subtle ways throughout history.



Ingrid P. Dickenson (<https://t.umbl.com/redirect?z=http%3A%2F%2Fwww.earthbreathing.co.uk%2Findex.htm&t=MGU3ZjJjZjBkNjk3MmQyMjUxZTYwMmUyOGQwMTc5NTI4ZTFIMmQwMCMxUbU4zdWpESg%3D%3D&p=>) writes, "If we see the energy field as a blueprint of the physical body, then we understand why stress and worry affect our health.

More and more people now visit their GPs complaining of symptoms due to stress. One of the effects of prolonged stress is a breakdown of the immune system, often leading to auto-immune diseases. The medical profession is often helpless when faced with auto-immune disorders and can only help to alleviate the symptoms but not affect a cure.

A depleted energy field will slow the body down, although there might be no pathological disease present as yet. But, as this energy field acts like a blueprint of the physical body, sooner or later a depleted or unbalanced field will create physical problems. It makes sense to correct this imbalance `before` it becomes a physical condition."

My thoughts....

Our human brain and cells contain magnetite, the most magnetic of all the naturally occurring minerals. Our human brain harmonizes with the Schumann Resonance of 7.83 Hz of our planet, and therefore, with the geomantic lay-lines of our planet and its **morphogenetic field**.

(https://t.umbl.com/redirect?z=http%3A%2F%2Fwww.sheldrake.org%2FArticles%26Papers%2Fpapers%2Fmorphic%2Fmorphic_intro.html&t=ZjMyYmI1ZjJhZDgzYWNIMDBiND) We are constantly, magnetically self-referencing with our planet.

This means we are bio-energetically phase-locked with our planet. Any stress that occurs to our planet or us effects us both, deeply. PTSD damages our ability to stay "centered" and "navigate" in our daily lives. The effect of human pollution, nuclear weaponry, HAARP damage etc..., to our planet, simultaneously damages us.

I found that I could heal my damaged electromagnetic field with our ChiTags. Since incorporating magnetite into my ChiTag design, I am much calmer and more centered. I don't have nightmares anymore. My family feels victorious, and I feel in control of my ptsd for the first time in 25 years.

Sources:

<http://www.asc-alchemy.com/mono.html> (<https://t.umbl.com/redirect?z=http%3A%2F%2Fwww.asc-alchemy.com%2Fmono.html&t=MzY5YjEwNTNhYTk5YzYyZndmOTA0OGZmNmM1NjNkMWJlODFiNjJhZixUbU4zdWpESg%3D%3D&p=>)

<http://www.saisanjeevini.org/> (<https://t.umbl.com/redirect?z=http%3A%2F%2Fwww.saisanjeevini.org%2F&t=ZWJlOGQzZTFjMjdmY2I2ZDU4OGQ2N2Y4ZDRkZmM0NTBiMTI1Njg0NixUbU4zdWpESg%3D%3D&p=>)

<http://www.affs.org/html/biomagnetism.html> (<https://t.umbl.com/redirect?z=http%3A%2F%2Fwww.affs.org%2Fhtml%2Fbiomagnetism.html&t=MDg2ODJiYzJiMmFmZGM0YjJjZDU3OGI2YTZhOThkMjg>)

<http://ourworldis5dnow.blogspot.com/2012/06/magnetite-great-pyramid-and-order-of.html> (<https://t.umbl.com/redirect?z=http%3A%2F%2Ffourworldis5dnow.blogspot.com%2F2012%2F06%2Fmagnetite->

great-pyramid-and-order-
of.html&t=MTE3NjVIMjM2YTBlMmMzNTU3MzMOMDYyYWNjNTQyOGE3ZGI3MDdkOSxUbU4zdWpESg%3D%3D&p=)

<http://anthropology.net/2006/11/21/the-tiny-magnetite-compass-in-the-human-nose/> (<https://t.umbl.com/redirect?z=http%3A%2F%2Fanthropology.net%2F2006%2F11%2F21%2Fthe-tiny-magnetite-compass-in-the-human-nose%2F&t=MzEzMTFiYWUxNWZjYTc5YTM0ZDZjZDMzNzExNGVIMWY3ZjkMzhmOCxUbU4zdWpESg%3D%3D&p=>)