

(/default.htm)

Briones Regional Park

Notice

Briones Regional Park is OPEN.

PARK INFO

Address:

Alhambra Staging Area

2537 Reliez Valley Road

Martinez, CA (<https://goo.gl/maps/jljxm>)

Bear Creek Staging Area

1611 Bear Creek Road

Lafayette, CA

([http://www.google.com/maps/place/16+Bear+Creek+Rd,+Lafayette,+CA+94549/@37.925699,-122.16252,13z/data=!3m1!1e3!3m2!1s1611+Bear+Creek+Road,+Lafayette,+CA+94549!8m2!3d37.925699!3d-122.16252,13z](http://www.google.com/maps/place/16+Bear+Creek+Rd,+Lafayette,+CA+94549/@37.925699,-122.16252,13z/data=!3m1!1e3!3m2!1s1611+Bear+Creek+Road,+Lafayette,+CA+94549!8m2!3d37.925699!3d-122.16252))

Park Entrances

> Briones Road (<http://maps.google.com/maps?daddr=37.954064,-122.135243&hl=en&sll=37.817866,-121.79599&sspn=0.00934,0.01369&mra=ls&t=m&hl=en>)

> Lafayette Ridge (<http://maps.google.com/maps?daddr=37.906399,-122.100504&hl=en&sll=37.919064,-122.385077&sspn=0.009327,0.01369&mra=ls&t=r&hl=en>)

> Reliez Valley (<http://maps.google.com/maps?daddr=37.93939,-122.101151&hl=en&sll=37.964373,-122.140422&sspn=0.009321,0.01369&mra=ls&t=m&hl=en>)

> Reliez Valley (<http://maps.google.com/maps?daddr=37.93939,-122.101151&hl=en&sll=37.964373,-122.140422&sspn=0.009321,0.01369&mra=ls&t=m&hl=en>)

Discover your phone number:

Toll Free: 888-EBPARKS (1-888-327-2757) (tel:1-888-327-2757), option 3, extension 4508.



Park / Gate Hours

Alhambra and Bear Creek

Jan 1 - 31

8am - 5pm

Feb 1 - Mar 13

8am - 6pm

Mar 14 - Apr 10

8am - 7pm

Apr 11 - Sep 5

8am - 8pm

Sep 6 - Nov 6

8am - 7pm

Nov 7 - Dec 31

8am - 5pm

Parking Lot Hours

8am to sunset

Fees

Parking: \$3 per vehicle (when kiosk is attended); \$3 per trailered vehicle. Buses: \$25/per bus.

Dogs: \$2 per dog. Guide and Service dogs are free.

PLEASE NOTE: Dogs are **required** to be on leash (six-foot maximum) in certain areas within the park.

Maps

> [Lafayette Ridge Staging Area \(https://goo.gl/maps/w133yeYw88K2\)](https://goo.gl/maps/w133yeYw88K2)

> [Alhambra Creek Staging Area \(https://goo.gl/maps/APr9xEJ9suR2\)](https://goo.gl/maps/APr9xEJ9suR2)

> [Park Map \(https://www.ebparks.org/civicax/filebank/blobdload.aspx?BlobID=24155\)](https://www.ebparks.org/civicax/filebank/blobdload.aspx?BlobID=24155) [PDF]

Events: Briones Regional Park

Friday, October 9, 2020 (Today)

No entries to display.



- [About The Park \(https://www.ebparks.org/parks/briones/default.htm#about\)](https://www.ebparks.org/parks/briones/default.htm#about)
- [Park Features \(https://www.ebparks.org/parks/briones/default.htm#features\)](https://www.ebparks.org/parks/briones/default.htm#features)
- [Park Activities \(https://www.ebparks.org/parks/briones/default.htm#activities\)](https://www.ebparks.org/parks/briones/default.htm#activities)
- [Park Accessibility \(https://www.ebparks.org/parks/briones/default.htm#access_info\)](https://www.ebparks.org/parks/briones/default.htm#access_info)
- [To Reach The Park \(https://www.ebparks.org/parks/briones/default.htm#reach\)](https://www.ebparks.org/parks/briones/default.htm#reach)
- [Trail Map \(https://www.ebparks.org/parks/briones/default.htm#trailmap\)](https://www.ebparks.org/parks/briones/default.htm#trailmap)
- [Park Map \(https://www.ebparks.org/civicax/filebank/blobdload.aspx?BlobID=24155\)](https://www.ebparks.org/civicax/filebank/blobdload.aspx?BlobID=24155) [PDF]
- [Interpretive Panels \(https://www.ebparks.org/parks/briones/interpretive/default.htm\)](https://www.ebparks.org/parks/briones/interpretive/default.htm)

About The Park

With its rolling, grassy hills and secluded, shady canyons, Briones is a secret wilderness surrounded by the towns of central Contra Costa County. Although the park is close to Lafayette, Walnut Creek, Pleasant Hill, Concord, and Martinez, there are peaks within it from which you can see only park and watershed lands for miles in every direction.

From Briones Peak, the highest point in the park, there are panoramic views of Mount Diablo and the Diablo Valley to the east, the Sacramento River and Delta to the north, the East Bay hills and Mt. Tamalpais to the west, and Las Trampas Regional Wilderness to the south.

Dog Requirements

PLEASE NOTE: Dogs are **required** to be on leash (six-foot maximum) at all times in the following areas: Tavan Trail (all), Diablo View Trail between Alhambra Creek Trail and Hidden Pond Trail, Alhambra Creek Trail from the Alhambra Creek Staging Area south to the water trough, and Orchard Trail between Alhambra Creek Trail and west to the Briones Road gate. These leash-required areas are indicated by signage within the park.

Wildflower Photo Guide

- [Briones \(https://www.ebparks.org/civicax/filebank/blobdload.aspx?BlobID=23849\)](https://www.ebparks.org/civicax/filebank/blobdload.aspx?BlobID=23849) - 3.7 Mb, 11 x 8.5, 26 pp. [PDF]

() Park Features

Briones' 6,255 acres are home to many animals and birds, which forage on the grasslands or find shelter among the oaks and bays. You may see black-tailed deer, coyotes, squirrels, red-tailed hawks, turkey vultures, and if you are lucky, other more reclusive creatures. There are gorgeous wildflower displays in season. Park District naturalists often lead walks to view the park's natural and historic features.

() Park Activities

Briones is an ideal park for hiking, running, and horseback riding over the park's scenic trails; picnicking, birdwatching, and similar activities; and informal recreation such as kite flying, photography, and nature study. There are five major access points, of which the two most developed are the Alhambra Creek Valley Staging Area off Reliez Valley Road near Martinez and the Bear Creek Road Staging Area near Orinda and Lafayette.

Group Camping

Briones Regional Park's three group camping areas--Wee-Ta-Chi, Maud Whalen, and Homestead Valley--may be reserved by calling 1-888-EBPARKS or [\(1-888-327-2757\)](tel:1-888-327-2757), press option 2 or by writing to EBRPD Reservations, 2950 Peralta Oaks Court, P.O. Box 5381, Oakland, CA 94605-0381. Reservations must be made at least 5 days in advance.

You can check availability and see photos of the campsite on our [Facilities Search](https://apm.activecommunities.com/ebparks/Facility_Search) (https://apm.activecommunities.com/ebparks/Facility_Search) page.

Archery Range

The Briones Archers archery range is accessible off the Crescent Ridge Trail from Briones' west-side Bear Creek Road entrance. Website: [BrionesArchery.org](http://www.brionesarchery.org/) (<http://www.brionesarchery.org/>)

Picnicking

Briones Regional Park offers a number of first-come, first-served picnic sites with tables and barbecue stands at the Bear Creek Staging Area and the Alhambra Creek Staging Area. The park also has two larger, reservable group picnic areas at the Bear Creek Staging Area: Oak Grove, which can accommodate 50 people, and Newt Hollow, which holds 150. Alhambra Creek Staging Area has a new, 50-person reservable picnic site, Crow, which is fully accessible. For information or to make a reservation, call 1-888-EBPARKS or [1-888-327-2757](tel:1-888-327-2757) (<tel:1-888-327-2757>), press option 2.

Grazing

Cows and calves are in the Tabletop, Spengler, Blue Oak, Buckeye, Sunrise, and Lafayette Ridge trail areas. Yearling cattle are in Deer Creek, Pereirra , Valley, and Briones Crest trail areas. Please call the park if you have trail or grazing animal concerns or comments: [1-888-327-2757 \(tel:1-888-327-2757\)](tel:1-888-327-2757), option 3, ext. 4508.

Park Accessibility

Trail Accessibility Reports

- **Abrigo Valley Trail:**

[PDF \(https://www.ebparks.org/civicax/filebank/blobdload.aspx?BlobID=23854\)](https://www.ebparks.org/civicax/filebank/blobdload.aspx?BlobID=23854) | [MS Word \(https://www.ebparks.org/civicax/filebank/blobdload.aspx?BlobID=23856\)](https://www.ebparks.org/civicax/filebank/blobdload.aspx?BlobID=23856)

- **Alhambra Trail:**

[PDF \(https://www.ebparks.org/civicax/filebank/blobdload.aspx?BlobID=23851\)](https://www.ebparks.org/civicax/filebank/blobdload.aspx?BlobID=23851) | [MS Word \(https://www.ebparks.org/civicax/filebank/blobdload.aspx?BlobID=23853\)](https://www.ebparks.org/civicax/filebank/blobdload.aspx?BlobID=23853)

- **Old Briones Road Trail:**

[PDF \(https://www.ebparks.org/civicax/filebank/blobdload.aspx?BlobID=23857\)](https://www.ebparks.org/civicax/filebank/blobdload.aspx?BlobID=23857) | [MS Word \(https://www.ebparks.org/civicax/filebank/blobdload.aspx?BlobID=23858\)](https://www.ebparks.org/civicax/filebank/blobdload.aspx?BlobID=23858)

To Reach The Park

To reach the Bear Creek Staging Area on Bear Creek Road, exit Highway 24 at the Orinda/Camino Pablo exit and head toward Richmond. Turn right on Bear Creek Road and travel 5 miles to the staging area on the right.

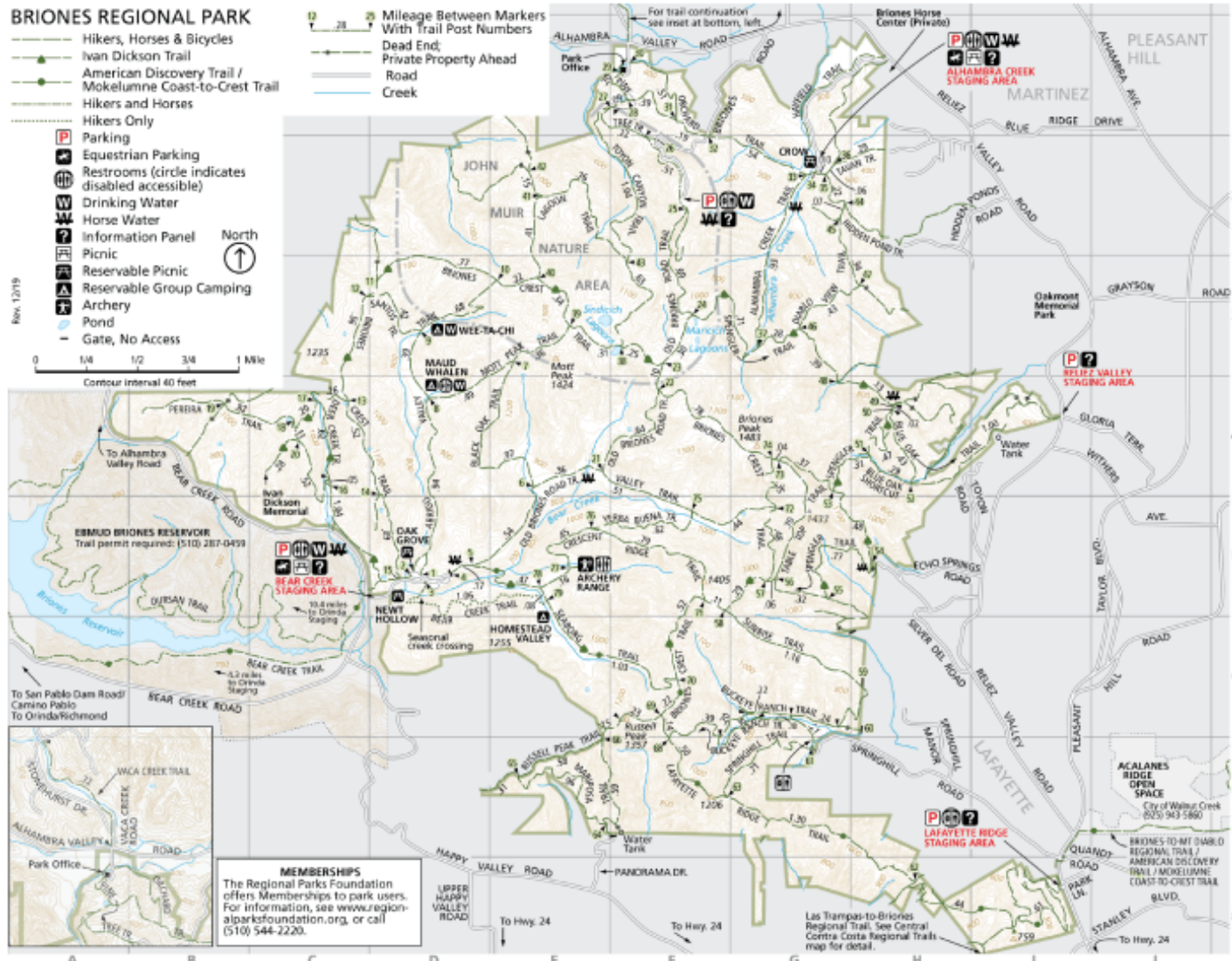
- [Public transit information \(https://www.ebparks.org/parks/publictransit/default.htm\)](https://www.ebparks.org/parks/publictransit/default.htm).

Transit & Trails: [Briones Regional Park \(http://transitandtrails.org/parks/briones-regional-park/\)](http://transitandtrails.org/parks/briones-regional-park/)
(transit, biking, and walking directions)

Trail Map

Click the map image below to see an enlarged version.

()



(https://www.ebparks.org/images/Parks/Briones/Briones_map-2250w.gif)

Download: Park Map (<https://www.ebparks.org/civica3/filebank/blobdownload.aspx?BlobID=24155>) (PDF)

Accessibility

Customize Your Experience

My EBParks

[./myebparks/.](/myebparks/)

Sign Up for eNewsletters

Subscribe

[./subscribe/.](/subscribe/)

Select Language 



Healthy Parks Healthy People

[./default.htm](/default.htm)

2950 Peralta Oaks Court, Oakland, CA 94605

1-888-EBPARKS, 1-888-327-2757

(Deaf or Hearing Impaired, use the TRS at 711)

© 2018 East Bay Regional Park District

All rights reserved

