

# 3.9 quake – second of the day – shakes San Diego County, felt in Coachella Valley

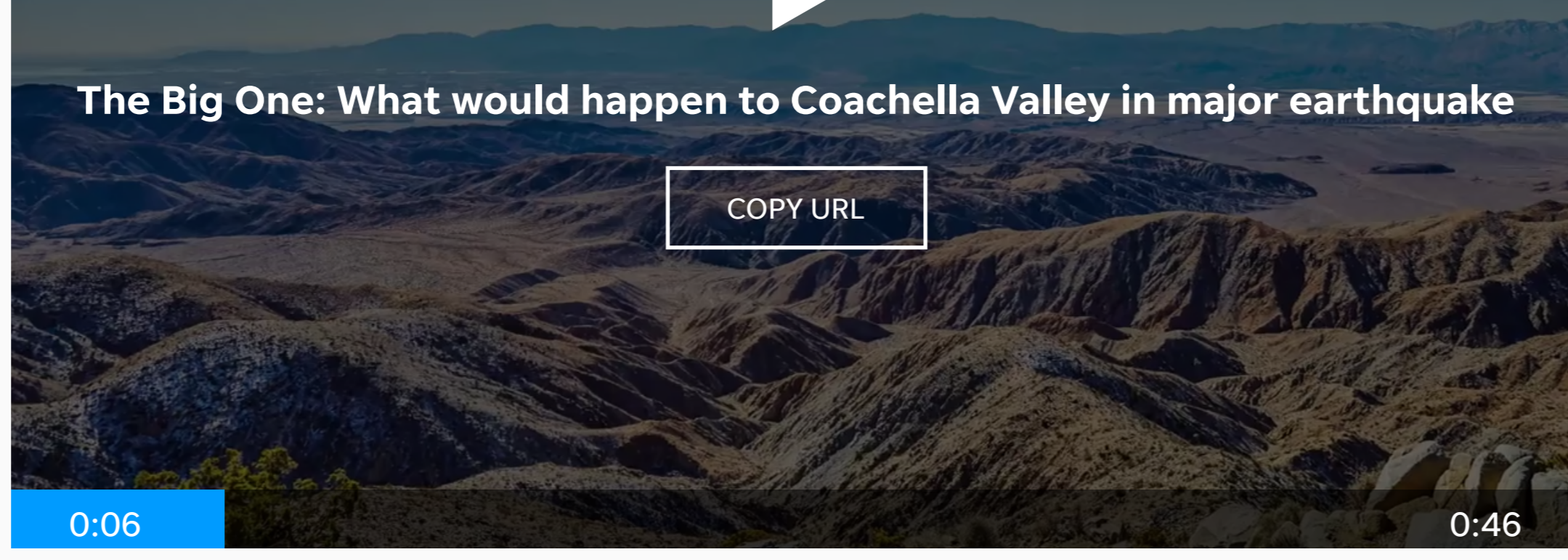
Marie McCain, The Desert Sun | Published 7:03 p.m. PT April 25, 2018 | Updated 12:59 p.m. PT April 26, 2018



FROM THE USA TODAY NETWORK

Desert Sun.

HOME NEWS SPORTS BUSINESS LIFE OPINION OBITUARIES USA TODAY JOBS SUBSCRIBE MORE



The area around Palm Springs is due for a massive earthquake. It would destroy homes and split the freeway in three places. But few homeowners have earthquake insurance. Wochit



(Photo: Wally Santana/AP)

CONNECT TWEET LINKEDIN COMMENT EMAIL MORE

The U.S. Geological Survey reports a 3.9-magnitude earthquake was registered at 6:36 p.m. local time Wednesday. It was the second quake of the day.

The evening quake was centered about 10 miles north-northeast of Borrego Springs in San Diego County, about 87 miles southwest of Palm Springs.

Coachella Valley emergency personnel received several calls from valley residents who said they felt the quake, but there were no reports of injuries or property damage.

A magnitude 3.2 earthquake was recorded just north of Moreno Valley Wednesday morning.

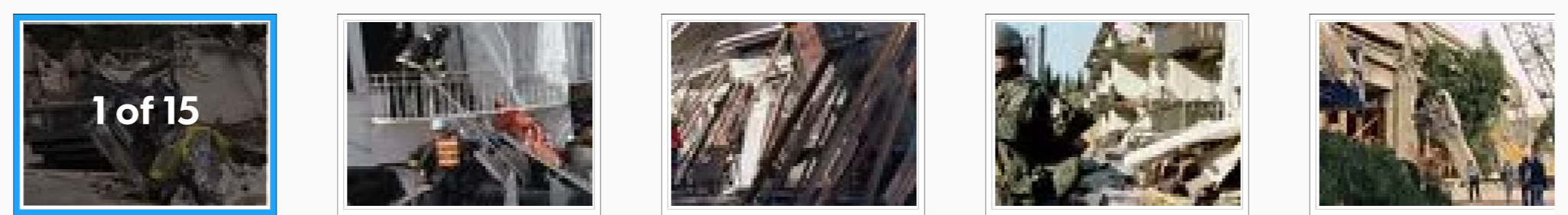
No reports of injuries or damage were immediately reported, but residents throughout the Inland Empire felt the shaker at 9:52 a.m. The temblor's epicenter was about four miles northeast of Moreno Valley, according to the U.S. Geological Survey.

Residents concentrated mostly in Moreno Valley and Riverside reported feeling the quake on the USGS "Did You Feel It?" website, but a few responses came in from as far as Palm Springs and Los Angeles.

The quake was the second to hit the county in the last 24 hours, with USGS also reporting a predawn magnitude 2.6 quake just before 3 a.m., with an epicenter about a dozen miles northwest of Desert Center.



## A look at some of California's worst earthquakes



**More:** [Desert Regional could lose more than 100 hospital beds if it doesn't get earthquake compliant by 2030](#)

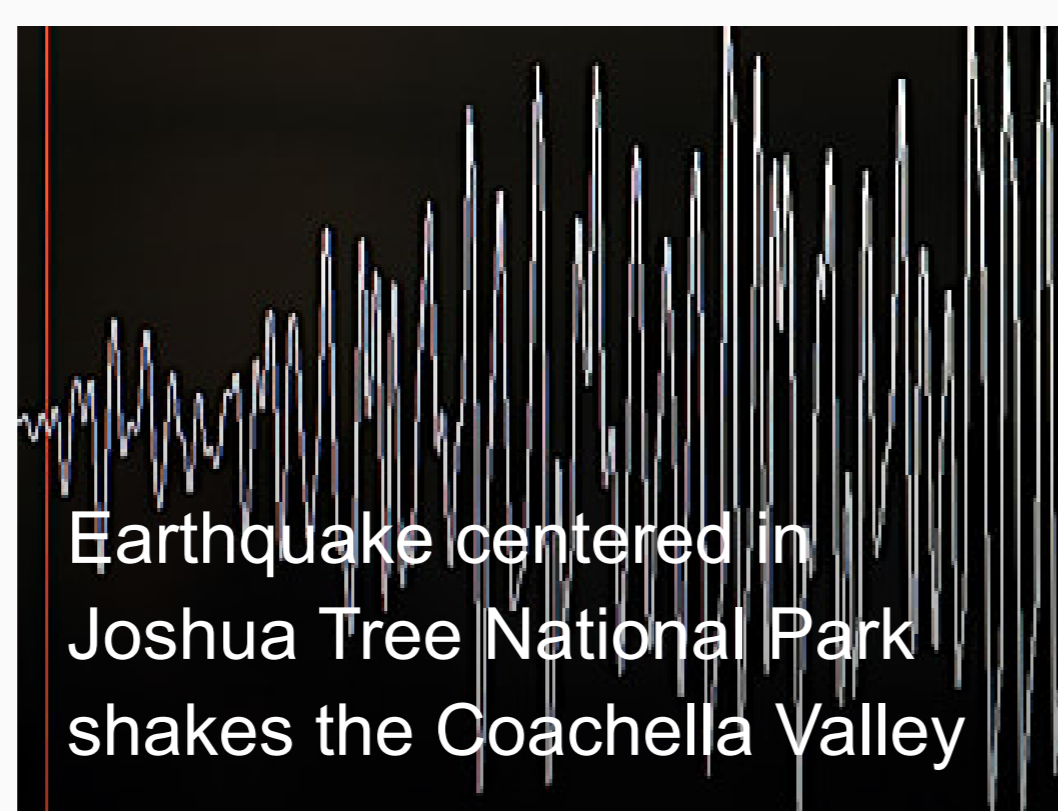
**More:** ['The Big One' would wreck the Coachella Valley and most locals don't have earthquake insurance](#)

**More:** [Did California's small earthquakes cause Mexico's big one?](#)

City New Service contributed to this report.

CONNECT TWEET LINKEDIN COMMENT EMAIL MORE

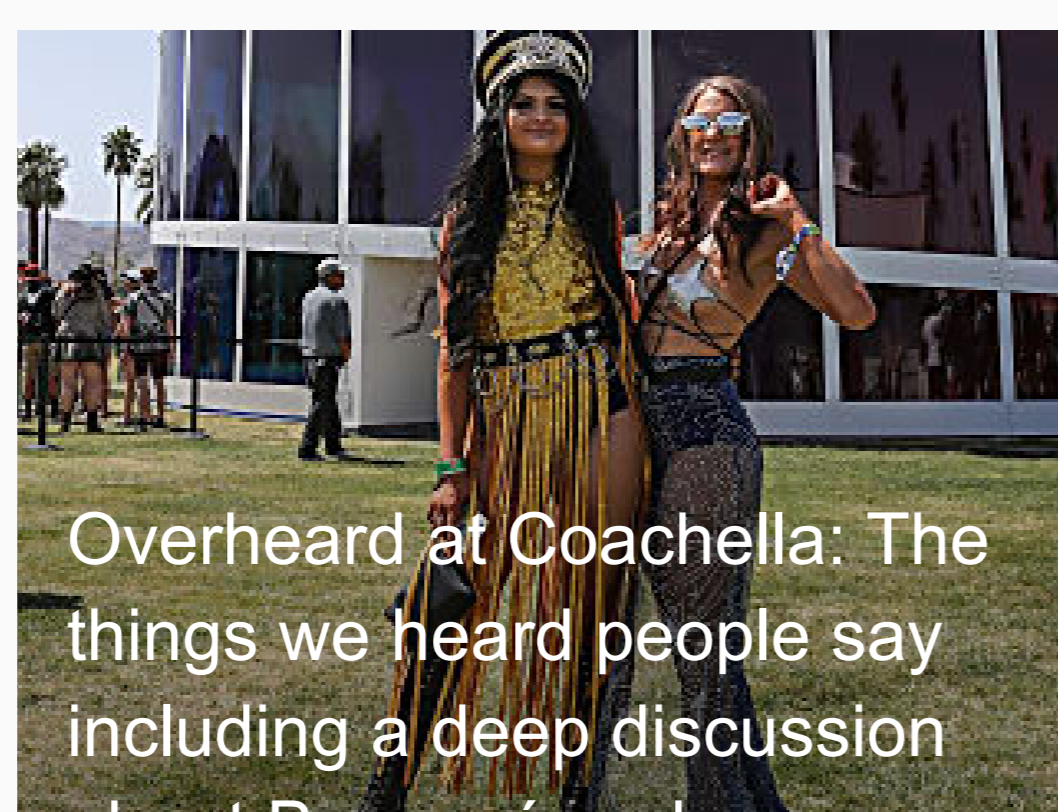
### MORE STORIES



DESERT SUN | 5 days ago



NEWS | 28 days ago



DESERT SUN | 3 days ago

### MORE STORIES

**Wind warning delays Coachella campground setup**  
April 19, 2018, 10:42 a.m.

**Thursday was windy. Monday may be worse**  
April 16, 2018, 8:18 a.m.

**Windy conditions, triple-digit temps hit desert**  
April 12, 2018, 10:04 a.m.

**Magnitude 3.8 earthquake felt in valley**  
Feb. 26, 2018, 11:18 a.m.

**Mourners gather to remember mudslide victims**  
Jan. 14, 2018, 7:55 p.m.

**Snow falls at Palm Springs tram station**  
Jan. 9, 2018, 4:29 p.m.